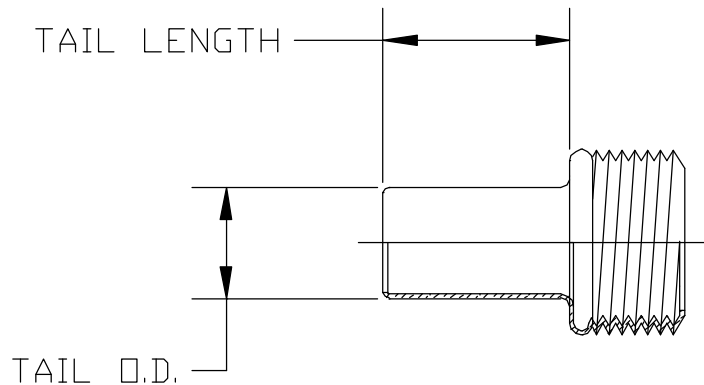


# APPLICATION GUIDELINES

## INTERNAL EXPANSION COUPLING



### General information

The easy way to select the proper size internal expansion coupling for the hose is to measure the I.D. (inside diameter) of the hose.

The correct tail O.D. (outside diameter) will be slightly smaller, approximately .002" to .015", than the measured I.D. of the hose.

Although a tail O.D. that is slightly larger than the hose I.D. will also work, it will require more force to insert the tail into the hose.

Also note that an over size tail will change the O.D. of the hose so that a larger I.D. "RIBBED FERRULE" may be necessary for the assembly. A 25% expansion of the tail is normal for the assembly process.